



News Release

21 January 2019

### **Mayflower High School to consult on plans for a new Sixth Form Centre**

Mayflower High School today announced a community consultation about plans to build a new Sixth Form Centre. The school has been judged as Outstanding and outcomes are among the best in the County. Current Sixth Form facilities can no longer accommodate the growing number of students. Mayflower presently has over 300 Sixth Form students, almost all of whom were previous students.

The new building will provide a modern, fully equipped study area for 6<sup>th</sup> Form students. A detailed design has still to be agreed but an artist's impression of the new centre appears at Appendix 1. The overall project cost is estimated to be £4.5m and the school is required to fund this in full. There will be no contribution from Government and all costs must be met from the school's own resources. The school intends to generate funds by selling the plot of land marked red on the plan at Appendix 2.

Most of this plot comprises waste land that has never been used since the school was first built over 50 years ago and has previously been a safeguarding risk and maintenance burden. Whilst a small piece of school playing field will also be included in the sale, the school will compensate for this by installing an all-weather games pitch to ensure no reduction in useable space.

The land sale requires permission from the Secretary of State for Education and, as part of its submission, the school needs to gather views from the local community. A link is available on the school's website which provides all the relevant information. Alternatively, if you do not have access to the internet, you may telephone the school on 01277 623171 for a hard copy.

**Please note that this consultation relates only to the land disposal and not its subsequent use. The latter will be subject to separate consultation under any application for planning consent.**

Further information can be found on the school's website at [www.mayflowerhigh.essex.sch.uk](http://www.mayflowerhigh.essex.sch.uk). The consultation ends on 1 March 2019.

Additionally, there will be a public meeting at the school on Monday, 11 February 2019 from 19.00 – 20.30 in the current 6<sup>th</sup> Form Centre.

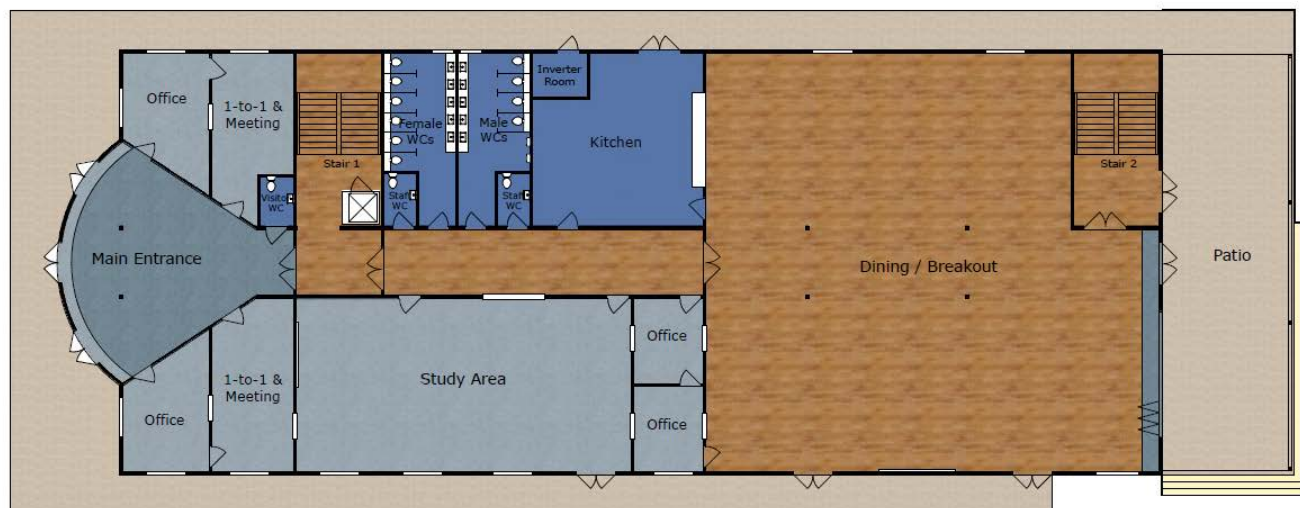
Yours faithfully

A handwritten signature in black ink, appearing to be "Stephen P Wright", written over a circular stamp or seal.

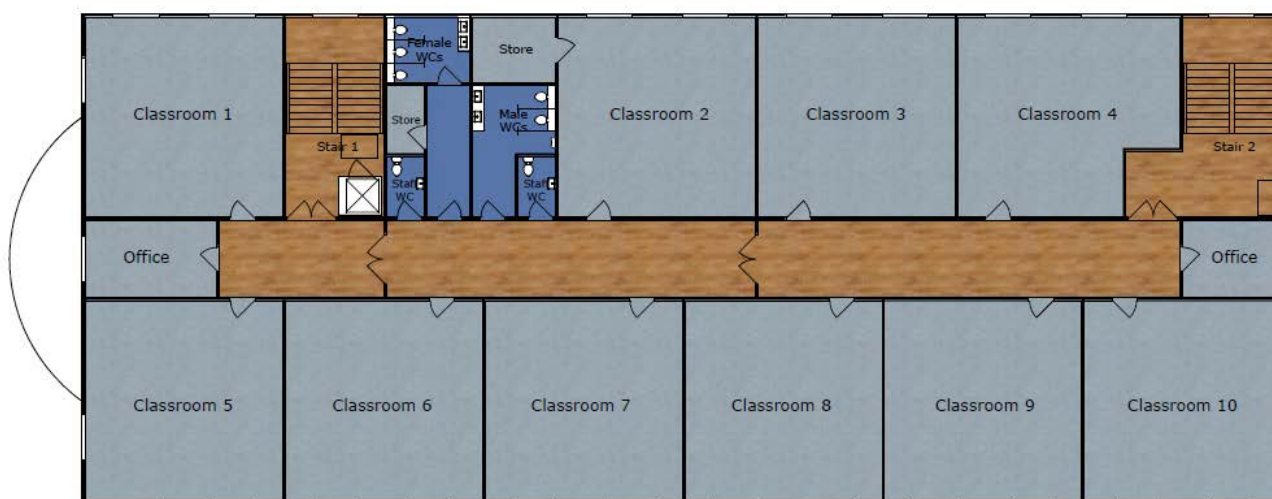
Mr Stephen P Wright  
Chair of Governing Body  
Mayflower High School

## Appendix 1

### Proposed Mayflower High School Sixth Form Centre - Indicative Floor Plans and Artist's Impressions



**GROUND FLOOR**  
Scale 1:200



**FIRST FLOOR**  
Scale 1:200





## Proposed Mayflower High School Sixth Form Centre - Proposed Land Sale

This aerial map shows the Mayflower High School campus and its immediate surroundings. A red outline delineates a large, open green field, which is the school's sports field. To the west of the field is the school's main building and a sixth form building. Further west, there are several commercial and community buildings, including a pet clinic and a day nursery. The map is labeled with various streets such as Stock Rd, Oakwood Dr, Cambridge Rd, and Norley Rd. A Google Maps logo is visible in the bottom left corner.